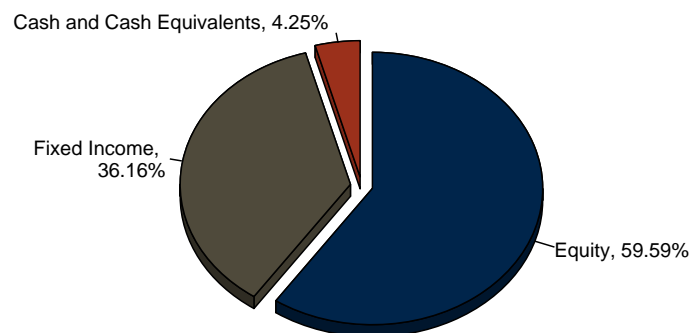


# Asset Allocation

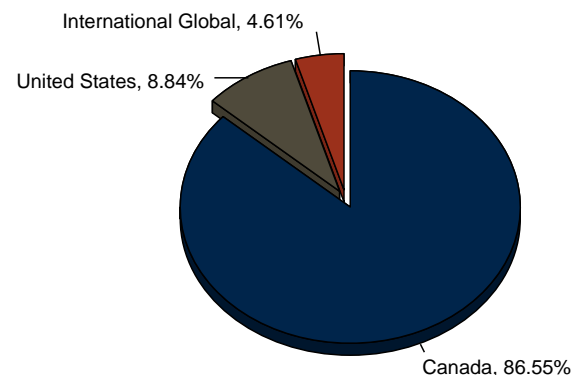
## Portfolio Allocation

As at December 31, 2015

### Asset Class Allocation



### Geographic Allocation



	Canada		US		Global		Unclassified		Total Market Value	Total %
	Market Value	%	Market Value	%	Market Value	%	Market Value	%		
Equity	97,989	46.14	18,755	8.83	9,795	4.61	0	0.00	126,538	59.59
Fixed Income	76,782	36.16	0	0.00	0	0.00	0	0.00	76,782	36.16
Cash and Cash Equivalents	9,019	4.25	13	0.01	0	0.00	0	0.00	9,032	4.25
Total Assets	183,790	86.55	18,768	8.84	9,795	4.61	0	0.00	212,352	100.00
Total Liabilities (Margin)	0		0		0		0		0	
Total Portfolio	183,790	86.55	18,768	8.84	9,795	4.61	0	0.00	212,352	100.00

# Portfolio Summary

## Performance and Capital Review

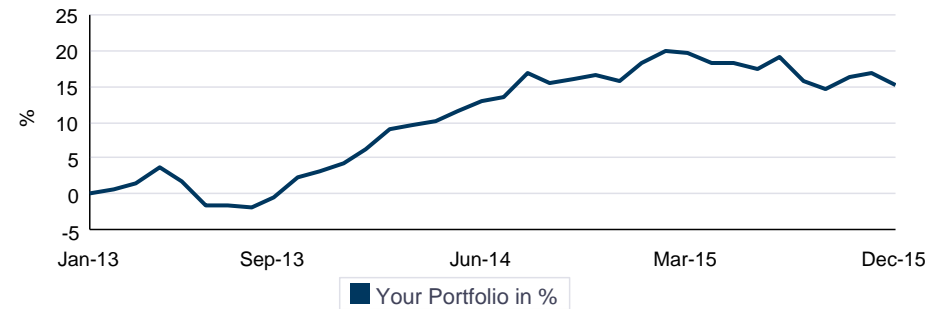
As at December 31, 2015

### Capital Review for the Reporting Period January 1, 2015 To December 31, 2015

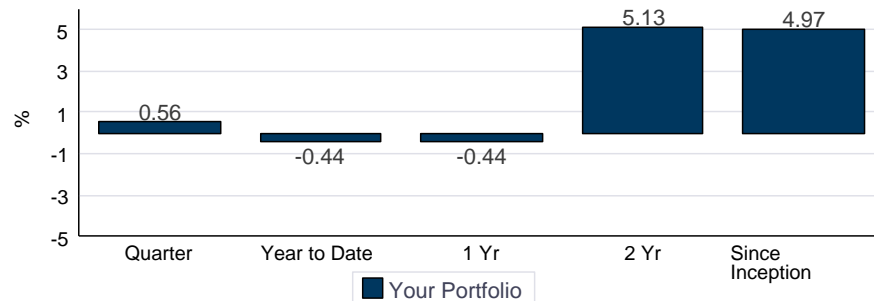
Capital Review	
Beginning Portfolio Value (January 1, 2015)	196,160.95
Net Contribution	17,621.51
Total Investment Returns	(1,437.24)
Ending Portfolio Value (December 31, 2015)	212,345.22

Net contribution consists of the sum of deposits and transfers-in less withdrawals, transfer outs, administration fees, and any applicable withholding taxes. The Market Values depicted on this page represent the point-in-time value of your Portfolio, as was reported on your Monthly Client Statements.

### Cumulative Returns January 24, 2013 To December 31, 2015



### Annualized Returns January 24, 2013 To December 31, 2015



### Performance Data For The Reporting Period January 24, 2013 To December 31, 2015

Period	Your Portfolio in %
Quarter	0.56
Year to Date	(0.44)
1 Year	(0.44)
2 Year	5.13
Since Inception	4.97

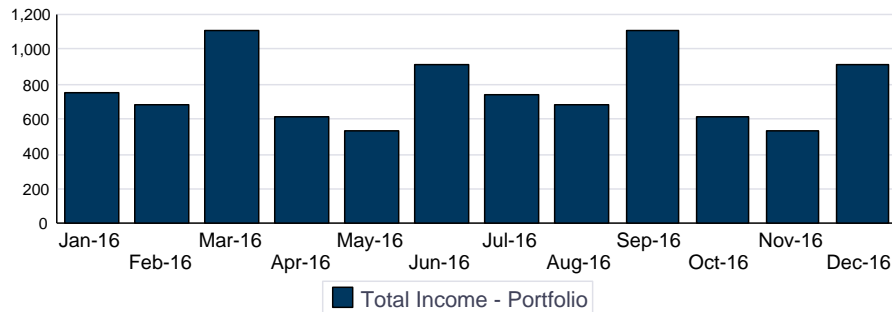
# Portfolio Summary

The Tyler Lewis Clean Energy Research Foundation

## Performance and Capital Review -

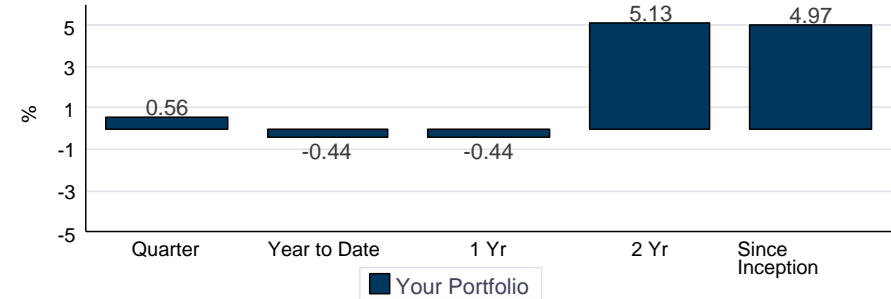
As at December 31, 2015

### Projected Monthly Income



### Annualized Returns

January 24, 2013 To December 31, 2015



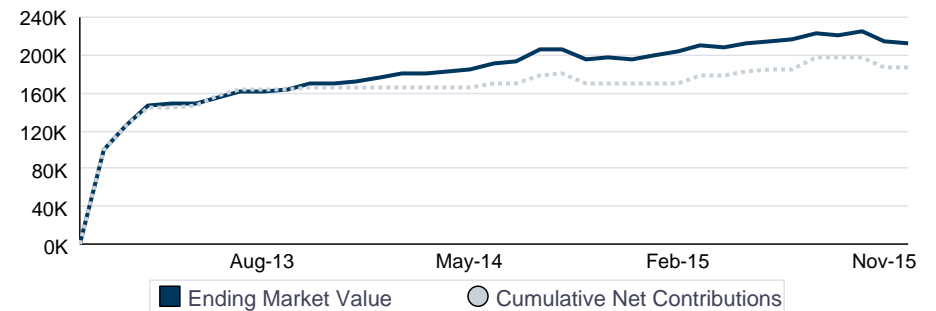
### Capital Review for the Reporting Period January 24, 2013 To December 31, 2015

Capital Review	
Beginning Portfolio Value (January 24, 2013)	0.00
Net Contribution	187,542.91
Total Investment Returns	24,802.31
Ending Portfolio Value (December 31, 2015)	212,345.22

Net contribution consists of the sum of deposits and transfers-in less withdrawals, transfer outs, administration fees, and any applicable withholding taxes. The Market Values depicted on this page represent the point-in-time value of your Portfolio, as was reported on your Monthly Client Statements.

### Market Value History

January 24, 2013 To December 31, 2015



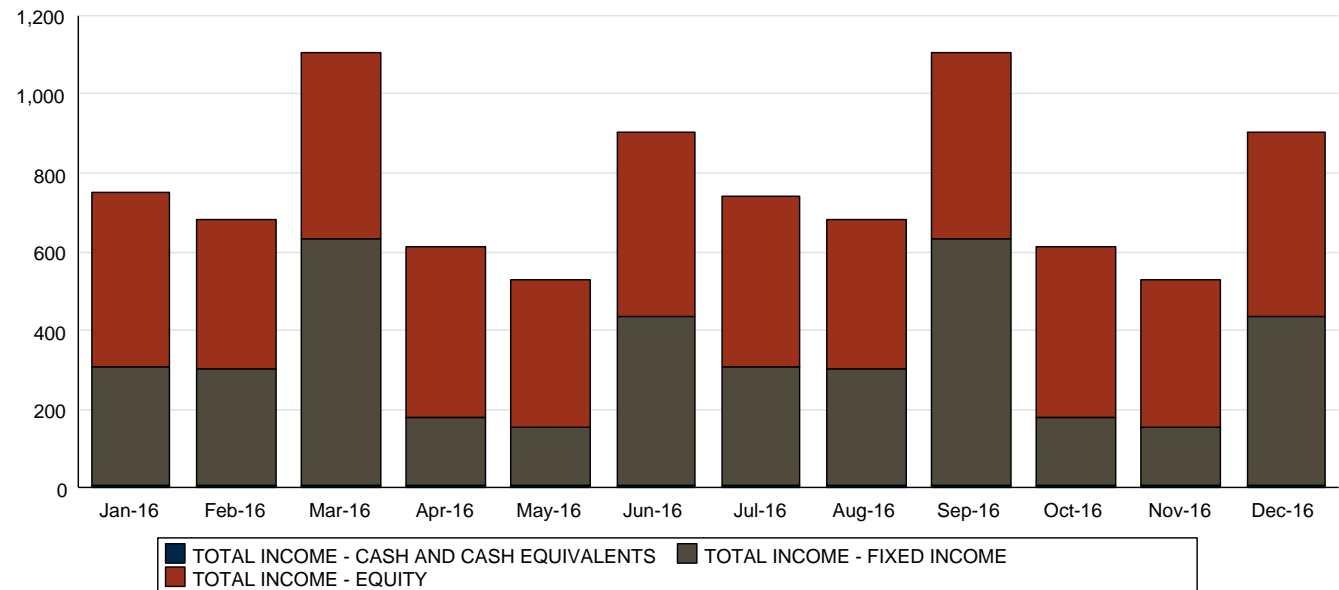
# Projected Monthly Income

The Tyler Lewis Clean Energy Research Foundation

## Projected Monthly Income - no details

As at January 8, 2016

Projected Monthly Income



- Excluding Reinvested Dividends.
  - ^ Held in USD.
- See Statement of Terms for conversion rates.

Asset Class	Jan-16	Feb-16	Mar-16	Apr-16	May-16	Jun-16	Jul-16	Aug-16	Sep-16	Oct-16	Nov-16	Dec-16	Est. Annual Income
<b>TOTAL INCOME - CASH AND CASH EQUIVALENTS</b>	6	6	6	6	6	6	6	6	6	6	6	6	72
<b>TOTAL INCOME - FIXED INCOME</b>	299	297	626	170	145	427	299	297	626	170	145	427	3,928
<b>TOTAL INCOME - EQUITY</b>	446	377	471	435	377	471	435	377	471	435	377	471	5,143
<b>Total Income - Portfolio</b>	<b>751</b>	<b>680</b>	<b>1,103</b>	<b>611</b>	<b>528</b>	<b>904</b>	<b>740</b>	<b>680</b>	<b>1,103</b>	<b>611</b>	<b>528</b>	<b>904</b>	<b>9,143</b>