

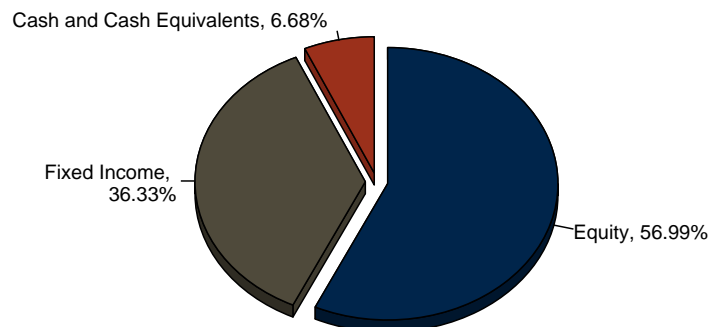
Asset Allocation

The Tyler Lewis Clean Energy Research Foundation

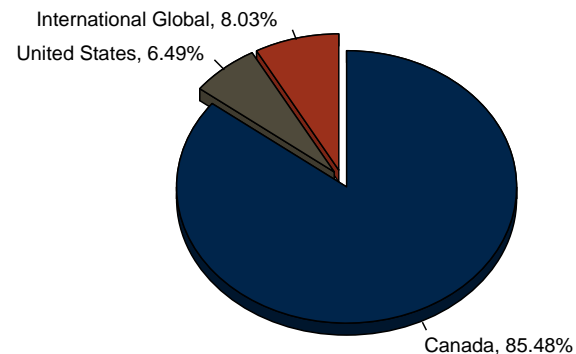
Portfolio Allocation

As at December 31, 2016

Asset Class Allocation



Geographic Allocation



	Canada		US		Global		Unclassified		Total Market Value	Total %
	Market Value	%	Market Value	%	Market Value	%	Market Value	%		
Equity	110,409	42.64	16,335	6.31	20,799	8.03	0	0.00	147,543	56.99
Fixed Income	94,062	36.33	0	0.00	0	0.00	0	0.00	94,062	36.33
Cash and Cash Equivalents	16,840	6.50	462	0.18	0	0.00	0	0.00	17,302	6.68
Total Assets	221,311	85.47	16,797	6.49	20,799	8.03	0	0.00	258,908	100.00
Total Liabilities (Margin)	0		0		0		0		0	
Total Portfolio	221,311	85.47	16,797	6.49	20,799	8.03	0	0.00	258,908	100.00

Portfolio Summary

Performance and Capital Review

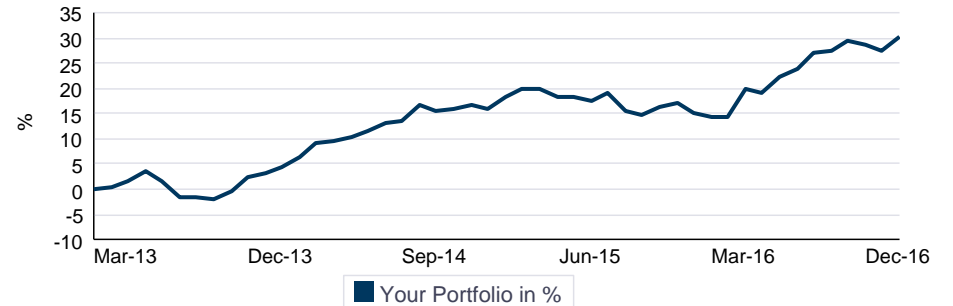
As at December 31, 2016

Capital Review for the Reporting Period January 1, 2016 To December 31, 2016

Capital Review	
Beginning Portfolio Value (January 1, 2016)	212,345.22
Net Contribution	18,062.75
Total Investment Returns	28,485.80
Ending Portfolio Value (December 31, 2016)	258,893.77

Net contribution consists of the sum of deposits and transfers-in less withdrawals, transfer outs, administration fees, and any applicable withholding taxes. The Market Values depicted on this page represent the point-in-time value of your Portfolio, as was reported on your Monthly Client Statements.

Time-Weighted Cumulative Returns January 24, 2013 To December 31, 2016



Time-Weighted Annualized Returns January 24, 2013 To December 31, 2016



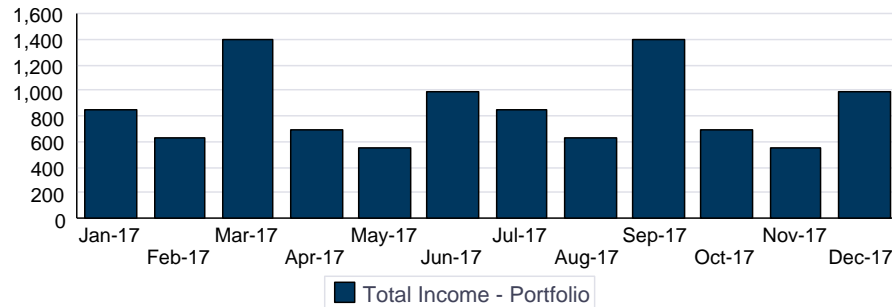
Time-Weighted Annualized Returns For The Reporting Period January 24, 2013 To December 31, 2016

Period	Your Portfolio in %
Quarter	0.78
Year to Date	13.00
1 Year	13.00
2 Year	6.07
3 Year	7.71
Since Inception	6.97

Performance and Capital Review -

As at December 31, 2016

Projected Monthly Income



Time-Weighted Annualized Returns January 24, 2013 To December 31, 2016

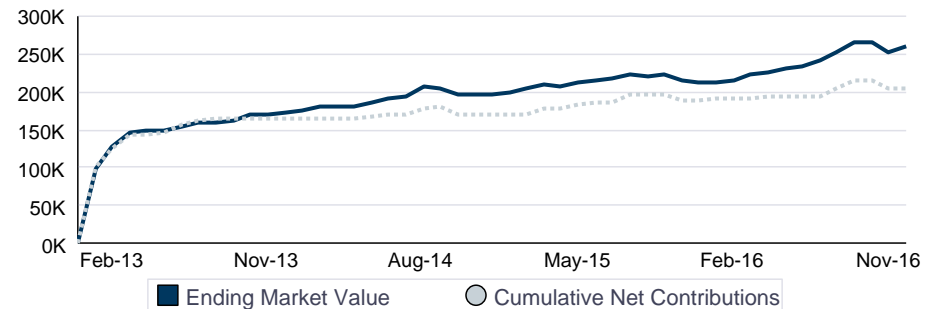


Capital Review for the Reporting Period January 24, 2013 To December 31, 2016

Capital Review	
Beginning Portfolio Value (January 24, 2013)	0.00
Net Contribution	205,605.66
Total Investment Returns	53,288.11
Ending Portfolio Value (December 31, 2016)	258,893.77

Net contribution consists of the sum of deposits and transfers-in less withdrawals, transfer outs, administration fees, and any applicable withholding taxes. The Market Values depicted on this page represent the point-in-time value of your Portfolio, as was reported on your Monthly Client Statements.

Market Value History January 24, 2013 To December 31, 2016



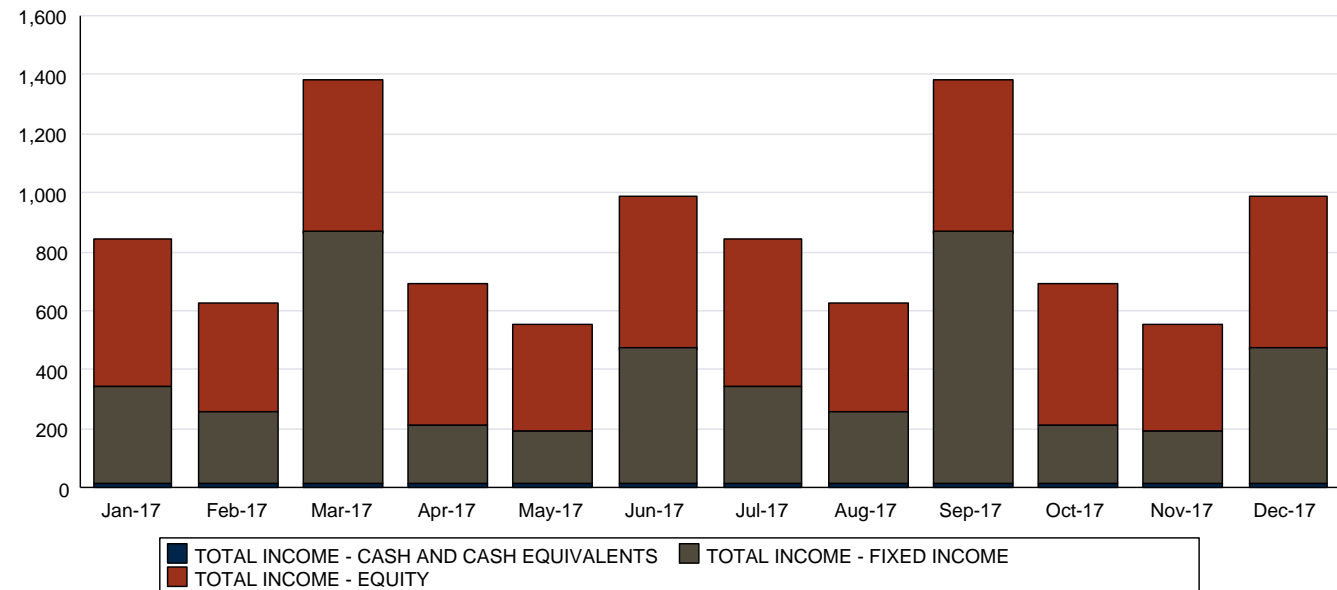
Projected Monthly Income

The Tyler Lewis Clean Energy Research Foundation

Projected Monthly Income - no details

As at January 6, 2017

Projected Monthly Income



- Excluding Reinvested Dividends.
 - ^ Held in USD.
- See Statement of Terms for conversion rates.

Asset Class	Jan-17	Feb-17	Mar-17	Apr-17	May-17	Jun-17	Jul-17	Aug-17	Sep-17	Oct-17	Nov-17	Dec-17	Est. Annual Income
TOTAL INCOME - CASH AND CASH EQUIVALENTS	13	13	13	13	13	13	13	13	13	13	13	13	156
TOTAL INCOME - FIXED INCOME	330	243	851	201	176	458	330	243	851	201	176	458	4,518
TOTAL INCOME - EQUITY	496	366	518	474	366	518	496	366	518	474	366	518	5,476
Total Income - Portfolio	839	622	1,382	688	555	989	839	622	1,382	688	555	989	10,150